

Accessibility

We want Casa Providencia to be welcoming to everyone, including guests who have disabilities. Our villa was not specifically designed with accessibility in mind, but so that you can decide how suitable it is for your particular needs, we have included this page on our web site to show what we have.

Some guests choose to park on the road near the back gate. There is a steel uphill incline to the front of the property. It this presents a challenge, guests would be better to use the paved parking area at the top. Be careful here, as there are low-level hazards which could scratch vehicle paintwork! The paved area is about 3m wide.



Slope up to front



Paved parking area

Once you have parked, the path to the front door is on the same level.



Front entrance doorway



Doorway to inner hall

The doorway to the outer hall has a low (about 20mm) threshold strip, but otherwise it is all on the same level. There is also a low (about 20mm) threshold strip at the door between the outer and inner halls. Thereafter, the bedrooms, lounge/dining area, kitchen and bathrooms are all on the same level. The front and all internal doors are typically 30" (760mm) wide.

Please note **there are no grab rails in any of the bathrooms**, but the shower tray in Bathroom 3 has a low lip. Bathroom 1 (the Master en suite) and Bathroom 3 are large enough to accommodate a wheelchair.

There are three exits from the villa to the upper terrace. Via the kitchen and Solana there is a door into the barbeque area. There is a step down from the kitchen into the Solana, and a slight slope up to the threshold strip for the external door (30", 760mm wide). Via the dining room area, there is a threshold strip and a step down on to the upper terrace through the sliding door. Similarly, the double patio doors from Bedroom 1 (the Master bedroom) have a threshold strip and a step down on to the sunbathing area of the upper terrace, a step of about 3½" (90mm).



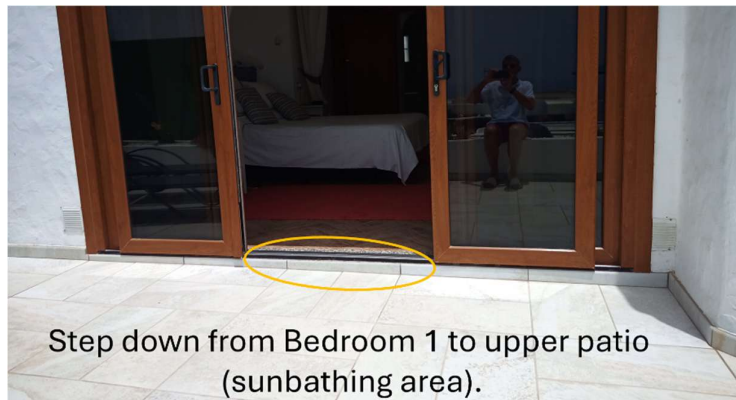
Step down from kitchen to Solana



Slope up from Solana to barbeque area

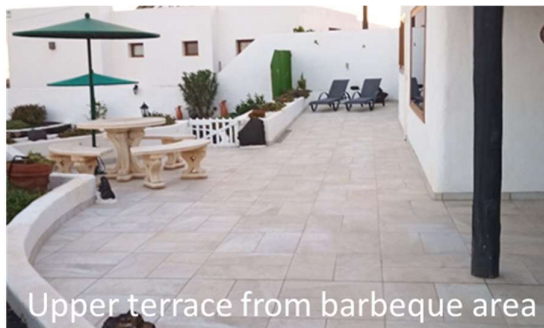


Step down from dining room to upper terrace



Step down from Bedroom 1 to upper patio (sunbathing area).

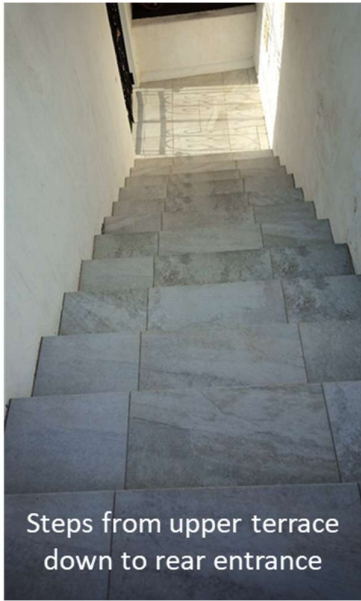
The upper terrace is on a single level between the barbeque area and the sunbathing area.



Upper terrace from barbeque area



Upper terrace from sunbathing area



Steps from upper terrace down to rear entrance

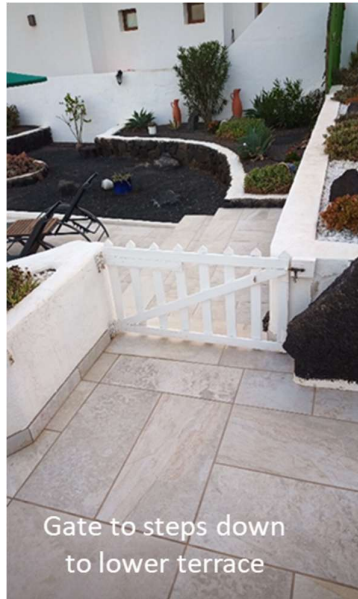


Steps from rear entrance down to road

From the upper terrace, there are two sets of steps. One gives access to a rear entrance on to the road on which you will drive to get to the villa. There is a gate at the top of the stairs sufficient to prevent small children from falling down the steps, but not larger children or adults.

There are 11 steps down to a small landing and a further two down to the road.

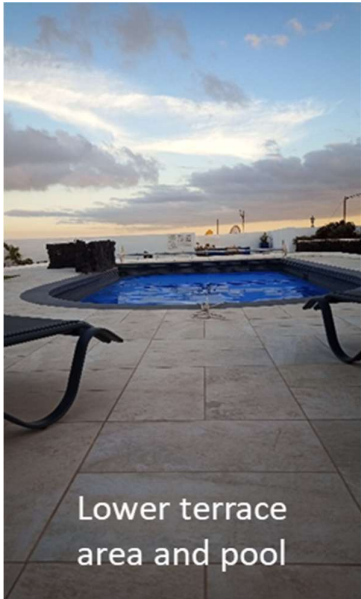
The other set of steps leads to the lower terrace, swimming pool and Hot Tub. This also has a gate at the top sufficient to prevent small children from falling down the steps, but not larger children or adults. There are three steps, to a large landing (approx. 12ft x 3ft or 4m x 0.9m) and a further two steps to the lower terrace.



Gate to steps down to lower terrace



Steps between upper lower terrace



Lower terrace area and pool



Steps to hot tub

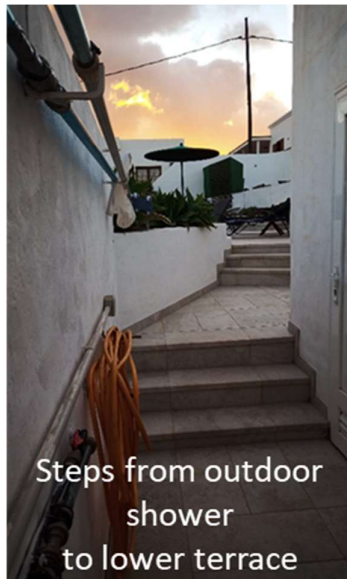
The lower terrace is on a single level, but to get into the Hot Tub there is a set of steps, followed by a drop into the water. There are no grab rails to assist, and we would generally suggest that guests who have physical disabilities either forgo the pleasures of the warm water and soothing jets, or have assistance from others to enter and exit the Tub.

Before entering the Hot Tub, we recommend guests have a quick shower. The shower is at the bottom of the steps which also give access to the room where the pool “toys” are stored

(floaters, inflatables, etc.).



Steps down to outdoor shower



Steps from outdoor shower to lower terrace

There are three steps to a small landing, where the pool “toys” can be found, and a further three to the shower area. By agreement with other guests staying at the villa, those with mobility problems that would make accessing the shower area difficult, may opt to not have a shower before entering the Hot Tub.